



Animal Welfare and Services

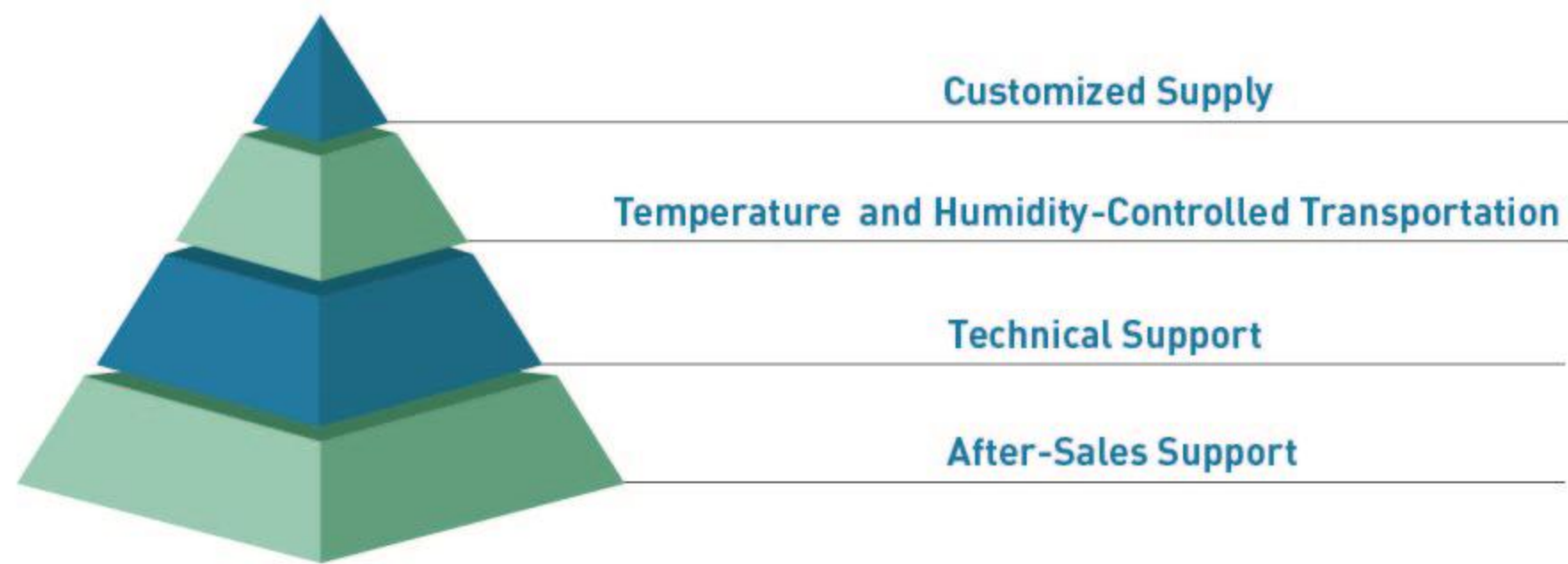
Animal Welfare + One-Stop Services—*KAL by Your Side Every Step of the Way*

▶ Advancing Animal Welfare and Protecting the Dignity of Life

KAL Biotech strictly follow the international 3R principles (Replacement, Reduction, and Refinement) and upholds animal welfare to a high standard. Leveraging spacious, standardized breeding facilities, the company provides laboratory Beagles with a high-quality living environment featuring controlled temperature and humidity and scientifically managed housing density. Enrichment items such as snuffle mats and puzzle toys, together with regular caregiver interaction, help reduce stress responses. KAL Biotech also maintains routine health examinations and professional care procedures to safeguard animal health, well-being, and dignity while supporting rigorous scientific research, reflecting the company's strong sense of social responsibility and humane care.

▶ One-Stop Research Support for Greater Efficiency and Peace of Mind

Guided by its commitment to "serving global scientific innovation," KAL Biotech provides not only high-quality Beagle models, but also comprehensive supporting services across the full process to help research programs advance efficiently:



KAL Biotech · Setting the Benchmark for China's Laboratory Animal Industry Advancing Global Scientific Innovation
Cultivating Standardized Laboratory Animals · Advancing Human Health



WeChat



KAL Biotech · Standardized Laboratory Animal Breeding Center

Cultivating Standardized Laboratory Animals to Advance Global Scientific Innovation

- International Standards
- End-to-End Lineage Traceability
- Animal Welfare Assurance

KAL Biotech | Wholly owned subsidiary of KCI Group

© JIANGSU KAL BIOTECH INC.
No. 28 Hongfei Road, Linjiang Town, Haimen District, Nantong, Jiangsu, China 226133

☎ Phone: +86-512-69998806

🌐 Website: www.kcibiotech.com

📱 Mobile: +86 13611324054/17768105064

✉ E-mail: BD@kcibiotech.com



KAL Biotech | Wholly owned subsidiary of KCI Group

Company Profile

About KAL · Deep Expertise Setting an Industry Benchmark

JIANGSU KAL BIOTECH INC. ("KAL Biotech") is a nationally certified enterprise specializing in the standardized breeding and supply of laboratory animals. The company has long served universities, pharmaceutical companies, CROs, and leading research institutions in China and abroad.

Guided by its core mission of "cultivating standardized laboratory animals to advance global scientific innovation," the company has established a standardized end-to-end system covering breeding selection, breeding and rearing, quality testing, and compliant delivery. Supported by a professional technical team and lean management practices, KAL Biotech provides stable, reliable, compliant, high-quality laboratory animals for life science research, supporting drug development and scientific discovery.

KAL Biotech operates 22,400 m² of internationally advanced laboratory animal breeding facilities. The company strictly complies with national standards for laboratory animals and holds a laboratory animal production license, enabling standardized, end-to-end management across animal housing, breeding, disease prevention, and quality control.

Through continuous technological innovation and rigorous quality management, KAL Biotech is committed to becoming a benchmark enterprise in China's laboratory animal industry and a trusted long-term strategic partner for global pharmaceutical companies and research institutions, advancing life science and human health through professional excellence.



Compliance with laboratory animal standards
Laboratory animal production license
Wholly owned subsidiary of KCI Group

| No. | 检测项目 TEST ITEM | 检测依据 TEST BASIS | 检测数量 TESTED | 合格数 PASS | 不合格数 REJECT | 结果 RESULTS | 备注 REMARK | VPL 编号 Accession No | 动物号 (按本号) ID | 检测项目 Test Item/结果 Results | | | | | |
|-----|------------------------|--------------------|--------------------|-------------|----------------|---------------|--------------|------------------------|-----------------|---------------------------|---------|--------|-----------|----------|-----|
| 1 | 狂犬病病毒抗体 (RV Ab) | ELISA-IgG | GB/T 14926.56-2008 | 6 | 0 | 0 | 0 | 25200500 | 510001(1) | RV Ab | CDV Ab | CPV Ab | IC(HV) AD | SALM | PDF |
| 2 | 犬瘟热病毒抗体 (CDV Ab) | ELISA-IgG | GB/T 14926.59-2001 | 6 | 6 | 0 | 0 | 25200501 | 510001(2) | | | | | | |
| 3 | 犬细小病毒抗体 (CPV Ab) | ELISA-IgG | GB/T 14926.57-2008 | 6 | 6 | 0 | 0 | 25200502 | 510001(3) | | | | | | |
| 4 | 传染性犬肝炎病毒抗体 (IC(HV) AD) | ELISA-IgG | GB/T 14926.58-2008 | 6 | 6 | 0 | 0 | 25200503 | 510001(4) | | | | | | |
| 5 | 沙门菌 (SALM) | CM | GB/T 14926.1-2001 | 6 | 0 | 0 | 6 | 25200504 | 510001(5) | | | | | | |
| 6 | 皮肤癣菌真菌 (PDF) | MT | GB/T 14926.4-2001 | 6 | 0 | 0 | 6 | 25200505 | 510001(6) | | | | | | |
| 7 | 体外寄生虫 (CTO) | MT | GB/T 18443.1-2001 | 6 | 0 | 0 | 6 | 25200500 | 510001(1) | ECTO | TOKO Ab | | | TICAN Ab | |
| 8 | 弓形虫抗体 (TOKO Ab) | ELISA-IgG | GB/T 18443.2-2008 | 6 | 0 | 0 | 6 | 25200501 | 510001(2) | | | | | | |
| 9 | 犬布鲁氏菌抗体 (BCAN Ab) | SAT | GB/T 14926.45-2001 | 6 | 0 | 0 | 6 | 25200502 | 510001(3) | | | | | | |
| | | | | | | | | 25200503 | 510001(4) | | | | | | |
| | | | | | | | | 25200504 | 510001(5) | | | | | | |
| | | | | | | | | 25200505 | 510001(6) | | | | | | |

Core Advantages of Beagles

Why Choose KAL Beagles? — An Internationally Recognized Gold-Standard Preclinical Model

As a "gold-standard" laboratory animal model, Beagles are widely used in preclinical research in pharmacology, toxicology, cardiovascular science, and metabolic studies due to their distinctive physiological characteristics. Combined with KAL Biotech's standardized breeding system, these advantages are further strengthened:

High Physiological Similarity

The cardiovascular system, metabolic mechanisms, and organ structures of Beagles share more than 90% similarity with those of humans. This high degree of comparability provides reliable translational reference data for drug development and aligns well with global research requirements.

Stable and Well-Controlled Genetics

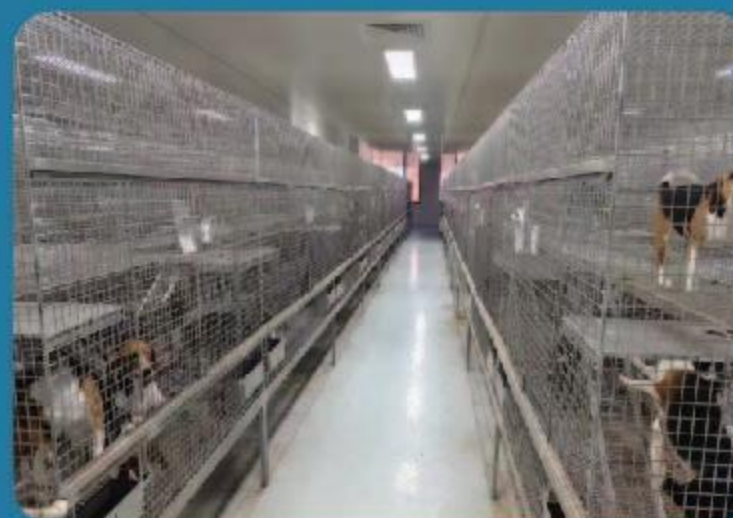
KAL Biotech employs a closed-colony breeding model supported by a comprehensive pedigree management system. Through standardized quality control procedures, each Beagle is provided with a traceable pedigree record, helping minimize individual variation and enhance study reproducibility.

Gentle Temperament and Ease of Handling

With a mild temperament, strong adaptability, and a low stress response, Beagles are easy to train and handle. They are well suited to blood collection, dosing, behavioral assessment, and other experimental procedures, helping reduce operational variability across research settings.

Quality Control Throughout the Entire Process

Supported by 22,400 m² of internationally advanced breeding facilities, every stage - from source selection to pre-delivery quarantine - is managed under a standardized system to ensure clear genetic background, defined health status, and compliance with international quality standards for every Beagle.



Breeding and Quality Control System

Breeding and Quality Control - Control every bit of reliability from the source

Leveraging internationally advanced breeding facilities, KAL Biotech has established a rigorous, full-lifecycle breeding and quality control system covering animal husbandry, breeding, disease prevention, and quality management. From breeding stock selection to puppy rearing, every step follows strict standards to ensure that each Beagle meets international research requirements.

Breeding Stock Selection

Healthy and genetically stable breeding dogs are selected through strict screening, with genetic and infectious diseases excluded to ensure source quality and build a strong foundation for model reliability. KAL Biotech currently maintains 450 core breeding dogs and more than 3,200 dogs in total, with the capacity to supply 6,000 breeding and laboratory dogs annually.

Closed Breeding

Supported by 22,400 m² of standardized breeding facilities, the operation adopts a closed management model equipped with IVC cages, independent ventilation systems, and constant temperature and humidity control to isolate external contamination and maintain a clean breeding environment.

Health Monitoring

A professional veterinary team performs regular comprehensive testing, including complete blood count, biochemistry, microbiology, and parasitology, while maintaining complete health records and continuous health monitoring for each dog.

Lineages Management

A comprehensive pedigree traceability system records each dog's parentage, date of birth, growth status, and test results in detail, ensuring clear and traceable genetic background.

Pre-Delivery Quarantine

Before shipment, each batch of dogs undergoes rigorous quarantine and is issued a qualified inspection report to ensure the absence of pathogen carriage, protect study safety, and meet international quality standards.



检测报告
TEST REPORT

报告编号: RAB02020716

报告日期: 2024-12-19

检测机构: 江苏凯尔生物技术有限公司
Jiangsu KAL Biotech Co., Ltd.

委托单位: 江苏凯尔生物技术有限公司
Jiangsu KAL Biotech Co., Ltd.

检测地址: 江苏省南京市江宁区江宁区 21 号
No. 21, Jiangbei Street, Jiangning District, Nanjing, Jiangsu Province

苏州凯尔生物技术有限公司
SUZHOU KAL BIOTECHNOLOGY CO., LTD. (CHINA)

实验动物生产许可证

许可证号: 苏证(动) 2024-0002

单位名称: 江苏凯尔生物技术有限公司

法定代表人: SHU JIANGSU

设施地址: 江苏省南京市江宁区江宁区 21 号

适用范围: 普通环境 (普通级) 犬、小型猫、3 号犬、04 号犬

有效期至: 2026-12-31 发证日期: 2024-12-19

发证机关: 江苏省农业农村厅
发证日期: 2024-12-19