

公司简介 COMPANY PROFILE

江苏珂玛麒生物科技有限公司（以下简称KMQ）隶属于凯斯艾生物科技（苏州）有限公司（以下简称KCI）旗下的全资子公司，是一家为医药研发领域提供临床前药效及成药性评价技术服务的CRO公司。致力于建立大动物（非人灵长类猴、犬、兔等）临床前药效及成药性评价平台。在心血管疾病、免疫性疾病、炎症性疾病、代谢性疾病、泌尿系统疾病，神经疾病等非肿瘤疾病以及肿瘤疾病等领域提供专业的临床前药理药效学评价服务。公司的核心竞争力来源于我们的创新和专业开发以及运行专项的疾病动物模型，以测试候选药物和医疗器械的药理作用和生物相关性。我们还进行PK/PD，早期非GLP毒理学，医学影像学，转化医学和病理学的研究服务。

Jiangsu KMQ Biotech Inc. (wholly owned by KCI) is a CRO company providing the preclinical medicine and drug resistance evaluation services. We are committed to the establishment of evaluation platform for preclinical efficacy and drug resistance using large animals (such as non human primates, dogs, rabbits, etc.) in the field of cardiovascular diseases, immune diseases, inflammatory diseases, metabolic diseases, urinary system diseases, CNS diseases and other non tumor diseases as well as tumor diseases. The core competitiveness of the company comes from our innovation and professional development as well as the operation of special disease animal models to test the pharmacological effects and biological relevance of the candidate drugs and medical devices. We also conducted PK/PD, early non GLP toxicology, medical imaging, translational medicine and pathology research services.



中国江苏省南通市海门市临江镇洞庭湖路100号B4楼
Building B4, Road #100 Dongting Lake, Linjiang Town, Haimen of Nantong, Jiangsu Province, P.R, China

TEL: +86-17768105064

Mail: zhuangyongjie@kcibiotech.com

www.kcibiotech.com 



BioTech

综合性临床前药效及成药性研究服务平台

Comprehensive preclinical pharmacodynamics and pharmacodynamic research service platform.

www.kcibiotech.com

设施能力 FACILITIES ABILITY

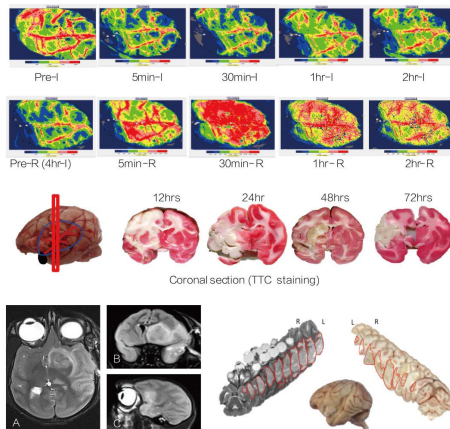
公司坐落于江苏省海门市临江生物科技园B4栋，占地7600㎡，一期实验基地拥有30000㎡的动物房，可同时开展豚鼠（500只），兔（300只），犬（200只）以及实验猴（240只）的不同体内药效学实验，1800㎡的功能实验室设有MRI，CT，X-线，B-超实验室，动物手术室和其它功能实验室。

Large animal facility is 36000sft. for guinea pig (500 cages), rabbits (300 cages), dogs (200 cages) and monkeys (240 cages) studies. Image system including MRI, CT; operation rooms, necropsy rooms and other platform are set onsite.

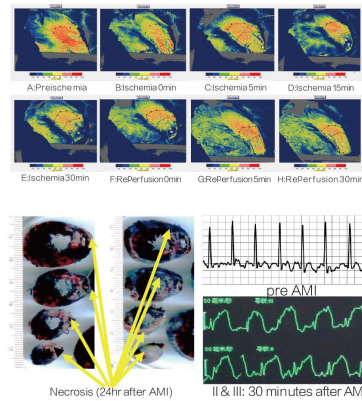


疾病模型 DISEASE MODELS

Stroke



AMI



PROCEDURAL CAPABILITIES

Techniques

- Ultrasound
- Surgical operation
- Various tissue biopsy
- MRI image and analysis
- CT image and analysis
- Many more…….

Pharmacology CNS disease

- Cardiovascular diseases
- Pulmonary diseases
- Urinary diseases
- Metabolic diseases
- Immune and inflammatory diseases
- Many more…….

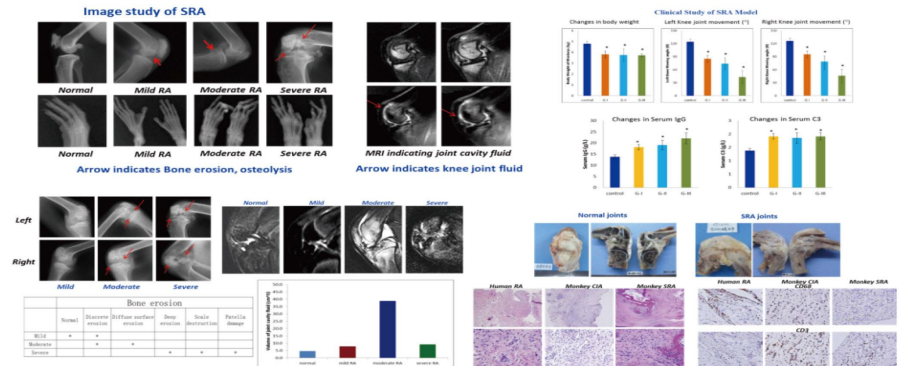
PK/PD

- Drug exposure (AUC)
- PK and TK parameters

Toxicology

- Non GLP toxicology

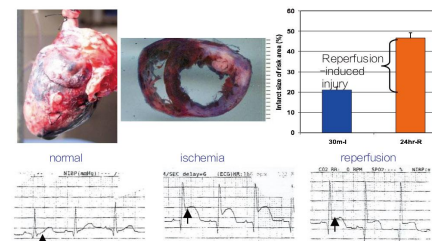
RA



NAFLD



AMI on rabbit model



Flow induced arterial remodeling on rabbit model

